

1 **Under ice spills of conventional crude oil and diluted bitumen:**
2 **Transgenerational effects and physiological resilience of blue mussel**

3

4 ** † Anthony Schmutz, † Réjean Tremblay, † Céline Audet, † Jean-Pierre Gagné, † Émilien Pelletier, †*
5 *Richard St-Louis.*

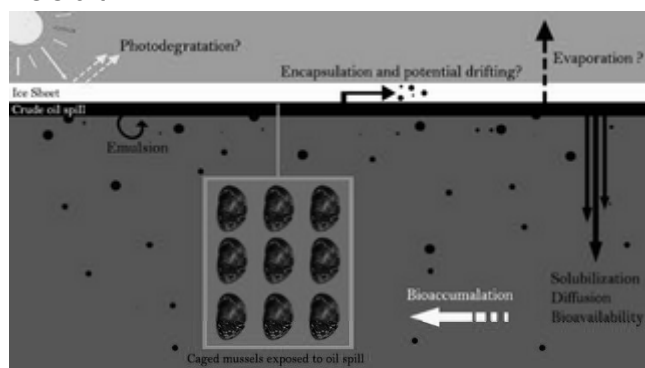
6 † Institut des Sciences de la Mer de Rimouski (ISMER), 310 allée des Ursulines, Rimouski, (Québec)
7 G5L 3A1, Canada.

8 ‡ Université du Québec à Rimouski (UQAR), 310 allée des Ursulines, Rimouski, (Québec) G5L 3A1,
9 Canada.

10

11

12 TOC art



13

14 ABSTRACT

15 Spillage at sea of diluted bitumen (dilbit) from oil sands has received little attention up to now. To our
16 knowledge, the impact of an acute exposure to dilbit has never been reported in blue mussels (*Mytilus*
17 *edulis*). Adult mussels were exposed to one conventional crude oil (Heidrun) and two dilbits (Cold Lake
18 Blend, Access Western Blend) for 7-days under icy conditions and then kept alive for three months until the
19 spawning season. Aromatic hydrocarbons bioaccumulation, physiological energetic budget, cellular stress,
20 byssus production and gametogenesis were monitored on exposed mussels. In spring time, spawning was
21 induced to characterize breeding success. The bioaccumulation of polycyclic aromatic hydrocarbons
22 (PAHs) in adults was detected after three days of exposure with higher PAHs tissues concentration related
23 to the conventional oil ($5.49 \pm 0.12 \mu\text{g}\cdot\text{g}^{-1}$ d.w.) compared to both dilbits ($0.91 \pm 0.02 \mu\text{g}\cdot\text{g}^{-1}$; $0.51 \pm 0.03 \mu\text{g}\cdot\text{g}^{-1}$
24 d.w.). Despite a rapid depuration combined with good resilience of exposed breeders, significant negative
25 effects were noted at cellular, physiological, and fitness levels especially in offspring. Our results suggest
26 a higher toxicity from the diluted bitumen compared to a conventional crude even with lower totalPAHs
27 bioaccumulation. Dilbits showed evident transgenerational negative effects on unexposed F1 generation.

28 Keywords: diluted bitumen, PAHs, blue mussel, winter oil spill, ice oil spill

29

30 INTRODUCTION

31

32 Worldwide oil demand is still on the rise due to increased needs from international markets, mainly in
33 developing countries. With present depletion of conventional oil reserves, unconventional oil sources
34 gradually gained attention to sustain future international petroleum demand ¹. Alternative unconventional
35 oil resources like bitumen and heavy-oil fields can mainly be found (~70%) in three countries: Venezuela,
36 Canada and U.S.A. In a smaller proportion, Middle-East, Asia, Africa and Russia also possess combined
37 bitumen heavy oil reserves ¹. The Athabasca geological formation (Western Canada) represents the biggest
38 know bitumen deposit with 45% of the world bitumen resources. Those tar sand deposits represent highly
39 biodegraded hydrocarbons from indigenous oil-degrading microorganisms. Low molecular weight
40 hydrocarbons being more sensitive to biodegradation, bitumen crudes contain a greater proportion of heavy
41 hydrocarbons, such as resins and asphaltenes ^{2,3}. Density and viscosity are therefore directly affected and
42 dilution of bitumen is mandatory prior to pipeline transit ³⁻⁵. Diluents are mainly composed of light
43 hydrocarbons mixed with the bitumen resulting in diluted bitumen (dilbit), gas condensates are often used
44 to obtain dilbits in a proportion of 30% diluent and 70% bitumen ²⁻⁴. As diluent composition can vary
45 depending on market availability and season (higher proportion of diluent in winter), the exact proportion of
46 light compounds is therefore unknown. This uncertainty is raising the question of the potential toxicity of
47 those highly complex crude mixtures. With international exportation expanding, seaborne oil trade will rise
48 ^{5,6} in upcoming years, exposing marine ecosystems and their species to spill risks ⁷. Although the resilience
49 of cold marine communities has been thoroughly studied following the *Exxon Valdez* accident, the
50 consequences of a massive dilbit spill in a cold environment is still unpredictable. Those ecosystems are
51 generally considered more sensitive and less resilient than temperate ones, mainly due to harsher
52 environmental conditions induced by low water temperature, when facing contaminant stress ⁸.
53 Furthermore, low temperatures coupled with important ice coverage modify physical and chemical
54 properties of spilled oil such as viscosity, density, evaporation, dilution, and degradation potentially affecting
55 oil fate and weathering ⁸⁻¹⁴.

56

57 A limited number of studies have already focused on the chemical and physical fate of diluted bitumen
58 spilled at sea, reporting mainly on viscosity and density changes and weathering processes ^{5,8,14-18}.
59 Dynamic changes in sea surface parameters such as wave action were included in studies, but none tested
60 the potential biological effects of an ice cover. In terms of ecotoxicological studies, only a few publications
61 covered physiological and ecological effects of toxic compounds associated with a dilbit spill. Most toxic

62 assessment studies used freshwater species ^{19–25}, or early life stages of salmonid species ^{26–30}, with
63 information lacking on reproductive process, larval supply and long-term exposure approach ³. Potential
64 toxic effects of dilbit heavy crudes on subarctic bivalve populations have not yet been explored and
65 biological responses are expected to be different from those observed with temperate species ³¹.

66
67 In the present study, the bivalve *Mytilus edulis* was used as sentinel species exhibiting adequate traits for
68 ecotoxicological studies such as the daily filtration of a large volume of seawater providing efficient
69 bioaccumulation and proxy for bioavailable hydrocarbons and other toxicants. Their sessile nature, size
70 and robustness allow easy *in situ* monitoring while being also suitable for laboratory exposure studies ^{32,33}.
71 During winter months, blue mussels reduce their overall activity although they keep filtering ³⁴. Mainly
72 depending on accumulated energetic reserve to survive through winter and start gametogenesis as soon
73 as environmental spring conditions becomes favorable ³⁵. Toxic effects of PAHs on bivalves have been
74 widely studied. Effects have been found on oxidative stress ³², endocrine system ³⁶, immunosuppression
75 ³⁷, bioenergetic status ^{38–40}, genotoxicity and cytotoxicity ^{41,42} pathology and disease susceptibility ^{43,44}.
76 Also widely studied are negative impacts on reproductive endpoints like gonad alteration ^{36,39,43–45} and
77 development or survival of exposed larvae ^{46,47}. Among various papers covering effects of PAHs on various
78 mussel biomarkers, only one study addressed transgenerational effects of dispersed crude oil on blue
79 mussels ³⁶.

80
81 To our best knowledge, no previous study has explored the toxic effects of spilled diluted bitumen on marine
82 species in ice-infested environment during pre-spawning season. Measuring dilbit effects on F0 breeders
83 and transgenerational impacts on F1 offspring is still unexplored. Our study was oriented in a global and
84 longer perspective to increase our understanding of short-term direct effects of dilbits on breeders coupled
85 with potential delayed indirect effects on the first generation following an oil spill. We therefore tested the
86 hypothesis that an under-ice crude oil spill (both conventional and dilbit) during gonad maturation period
87 will affect the integrity and resilience of adult mussels and the quality of their next breeding season, several
88 weeks after the exposure.

89 90 MATERIAL & METHODS

91 Details about experimental setting and analytical methods can be found in the Supporting Information
92 section.

93

94 Crude oil

95 Three different crude oils were tested without any alteration: one conventional oil from the North Sea,
96 Heidrun, and two unconventional oils, or dilbits, Cold Lake blend (CLB) and Access Western Blend (AWB).
97 CLB and AWB both originate from the Athabasca oil sand deposit in Alberta (Canada).

98

99 *Mytilus edulis*

100 Blue mussels (5-6cm, market size, 100% *M. edulis*) were obtained from a large mussel farm in St.Peter's
101 Bay, Prince Edward Island, Canada. Upon reception at UQAR's aquaculture facility in Rimouski (Quebec,
102 Canada), mussels were held in a large tank with running natural seawater pumped directly from the St.
103 Lawrence estuary and filtered through the glass beds filtration system of the station. No additional food,
104 other than natural particulate organic matter in the running water, was provided to mussels.

105

106 Exposure

107 Exposure experiments were conducted at UQAR's aquaculture facility, under a static regime, in a large
108 outdoor cylindrical mesocosm (3.2m height x 1.2m diameter) containing about 3500L of seawater delivered
109 by the station, and exposed to winter conditions prevailing from January to March 2016 (S1). Samples of
110 whole mussel tissues (n=7) were collected before exposure (t=0d exp.), after three days (t=3d exp.) and on
111 the last day (t=7d exp.) to monitor bioaccumulation of hydrocarbons during the exposure.

112

113 Post-exposure, depuration period

114 At the end of control and exposure treatments (corresponding to late March), each group of mussels were
115 transferred in clean mesh bags and suspended in an indoor mesocosm of the same design as the outdoor
116 mesocosm (3500L) with running clean seawater, until the beginning of the spawning season early May.
117 Mussel sampling started immediately after the 7-day exposure period and was repeated a month later. A
118 sampling event consisted of measurement of survival rate, followed by cellular (lysosomal membrane
119 stability; n=7), physiological (condition index, scope for growth, gonad histology, byssus thread; n=7) and
120 chemical (bioaccumulation of hydrocarbons; n=5) analyses on a total of 19 mussels.

121

122 Tissue analysis

123 Whole mussel tissues were freeze dried (FreeZone, Labconco, USA) and homogenized to a fine powder
124 with a Virtis homogenizer. A sub-sample of about 300mg was suspended in 5mL of tetramethylammonium

125 hydroxide (TMAH, 25% water, Sigma Aldrich) in a 12mL glass tube with a Teflon lined cap and vortexed
126 for one minute. The mixture was then heated (60°C) for one hour with manual stirring every 15min to
127 complete the alkaline digestion. After cooling the mixture to room temperature, 1.0mL of deionized water,
128 1.0g of NaCl and 4.0mL of hexane:toluene mixture (1:1) were added before stirring for one hour (Wrist
129 Action Shaker). The mixture was centrifuged (3000g) allowing the collection of the organic layer and
130 repetition of the extraction with another 4.0mL of hexane:toluene solution (1:1). The whole organic extract
131 was then cleaned on a silica column topped with sodium sulfate. The cleaned extract was evaporated under
132 nitrogen at room temperature to a final volume of 1000µL. A volume of 150µL of the concentrated extract
133 was pipetted and transferred to a GC vial equipped with a glass insert and a volume of 50µL of a solution
134 of deuterated PAHs and aliphatics was added as an internal standard. Organic extracts were analyzed by
135 gas chromatography (Trace GC, Thermo, USA) coupled with a mass spectrometer equipped with an ion
136 trap (Polaris Q, Thermo, USA). A capillary column (VB-5MS, 30mmx0.25mm i.d.; Valcobond™) and high
137 purity grade helium as carrier gas was used at a flow rate of 1mL.min⁻¹. Detection and quantification of
138 hydrocarbons (aliphatic, monoaromatic alkylated, polycyclic aromatic relatives and methyl derivatives,
139 heterocyclic aromatic carbazoles and dibenzothiophenes and methyl derivatives) were performed in scan
140 mode between 50-500amu with positive ions detection. Method blanks and analysis of a certified reference
141 material (SRM 2974a, Organics in freeze-dried mussel tissue, *Mytilus edulis*) were completed. Relative
142 standard error (n=5) for the quantitative analysis of thirteen PAHs in the SRM, varied between 5-20%
143 (median=11%). The median value for the recovery was 82% (41-118%). Results are presented in µg.g⁻¹.dry
144 weight and were not corrected for recovery yield. The LOD (mean of the blanks (n=6) plus 3 sigma), based
145 on 300mg size sample of dry tissue, varied from 0.7ng.g⁻¹ to 24 ng.g⁻¹ for 22 PAHs, with a median value of
146 2.4ng.g⁻¹.

147

148 Physiological energetic budget

149 Scope for growth is used as a physiological energetic index of filter-feeding animals and was obtained by
150 subtracting both energy respired and excreted from the energy assimilated from food, and illustrates the
151 mussels energy budget ^{48,49}. As the energy excreted being minimal (<5% of the energy budget) ⁵⁰, this
152 parameter was not monitored. Measurements were realized simultaneously on seven mussels and one
153 control (empty shell) in individual experimental chamber (Plexiglas cylinders of 1357mL) filled with
154 ultrafiltered (0.02µm) and UV sterilized seawater maintained in a temperature-controlled water bath
155 (4.2°C±0.82). The oxygen depletion was measured during one hour by a polarographic electrode (YSI
156 model 5775, USA). Clearance rate analysis, experimental chambers were opened, and air bubble injection

157 was added. The empty chamber control was used to determine the sedimentation level of microalgae. For
158 absorption efficiency, food and faecal samples (after continuous feeding during 24-48h; $60 \text{ cell.}\mu\text{L}^{-1}.\text{ind}^{-1}$)
159 were filtered onto pre-combusted and pre-weighed GFC filters (47mm for faeces and 25mm for food), then
160 rinsed with isotonic ammonium formate (3.2%), dried at 65°C for 72h, cooled to room temperature in a
161 desiccator, and re-weighed. Afterwards, they were combusted overnight at 450°C for 4h, cooled to room
162 temperature in a desiccator, and finally weighed again. This procedure provided estimates of the organic
163 and inorganic fractions contained in the food and faeces.

164

165 Lysosomal stability or Neutral red retention assay

166 An adapted method from Wyatt and collaborators⁵¹ was used to determine the lysosomal stability. Briefly,
167 the neutral red retention assay consisted in taking $700\mu\text{L}$ of hemolymph sampled from the posterior
168 adductor muscle of mussels with a $1000\mu\text{L}$ syringe (22.5-gauge needle). A subsample was then transferred
169 to a positively charged microscope slide and kept for 15min in a light-proof humidity chamber. Fresh neutral
170 red solution ($8.5\mu\text{l}$ of stock solution containing 28.8mg of neutral red in $1000\mu\text{L}$ of dimethyl sulfoxide
171 (DMSO) mixed with $500\mu\text{L}$ of filtered intervalvular fluid) was then added. After 60min incubation period,
172 haemocytes were examined Stressed cells were characterized by larger lysosomes or leakage of neutral
173 red dye into the cytosol. Lysosomal stability or cellular stress is express as the relative abundance (%) of
174 stressed cells on total analyzed haemocytes.

175

176 Byssus thread

177 As byssus thread diameter can be related to energetic availability of mussels⁵², this measure has been
178 added in this study. Two byssus threads were collected on five different mussels and kept in opened plastic
179 bags for analysis by digital microscope (VHX-2000, Keyence digital microscope system, Japan) mounted
180 with 250-2500X lenses (VH-Z250R). The threads were rehydrated, secured flat on microscope slides, and
181 their diameter was measured at five different locations on the distal section.

182

183 Gametogenesis

184 Gametogenesis development was determined in a portion of mussel mantle tissue preserved in 20mL
185 Davidson fixative solution⁵³ changed after 24h post-sampling. Prior to analysis, tissues were gradually
186 dehydrated in ethanol (75%, 70%, 90%, 95%) then infiltrated and embedded with methacrylate-based
187 embedding solution (kit JB-4, Sigma-Aldrich). Sections of $5\mu\text{m}$ thickness were stained with hematoxylin and
188 eosin (Ehrlich solution). Gamete maturation stage was determined based on the identification key by

189 Lemaire and collaborators³⁵. Each sample was analyzed for gamete volume fraction (GVF), atresia volume
190 fraction (AVF) and oocytes diameter measurements.

191
192 Breeders conditioning and larvae monitoring
193 One month prior to the induction of spawning, 60 exposed mussels from each treatment were randomly
194 selected and conditioned in open system tanks of 100L, and fed *ad libitum* with microalgae (*Tisochrysis*
195 *lutea*, *Pavlova lutheri*, *Chaetoceros muelleri*, ratio of 1:1:1). Eggs from different females were pooled
196 together. A similar procedure was done to recover spermatozoids from males and fertilization was realized
197 at a ratio of 20 sperms per oocyte. Larvae were reared at 18°C with a final concentration of 10 larvae.mL⁻¹
198 in 1µm filtered and UV treated seawater renewed every two days. Egg size, shell growth and survival were
199 estimated every two days. Survival rates were expressed as the total number of individuals minus the
200 cumulative amount of empty shells and based on the first sampling timepoint.

201
202 Statistical analysis

203 The software R and his extension R-studio (R-Core Team 2012, V1.1.453) were used for the statistical
204 analysis of data produced. First, values were checked for uniformity of both data distribution and variance
205 with Shapiro-Wilk test (uniformity of distribution) and a visual observation of the distribution of variance.
206 When needed, data were log-transformed to normalize their distribution. Two-way ANOVAs, coupled with
207 Tuckey posteriori tests, were used to compare differences between treatments and sampling periods. The
208 ggplot2-package (V3.1.0) was used for data illustration purposes.

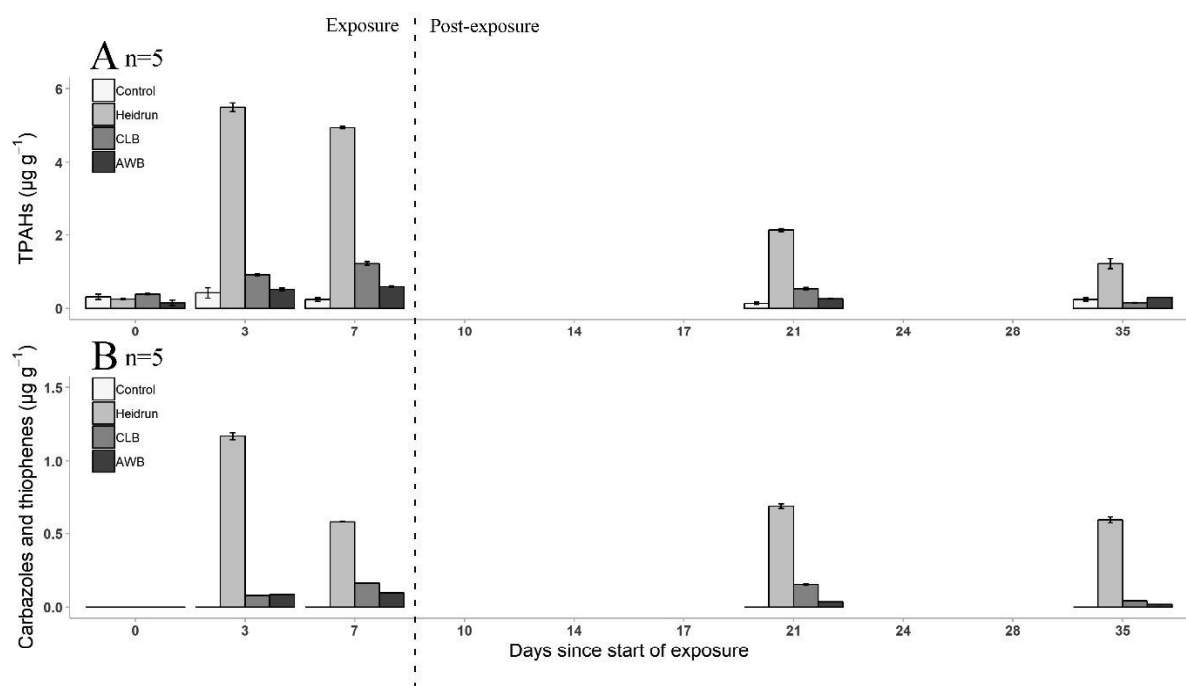
209
210
211 RESULTS & DISCUSSION

212 Bioaccumulation of hydrocarbons

213 The monitoring framework targeted 16PAHs selected by the United States Environmental Agency (USEPA)
214 as priority contaminants and their alkylated congeners for a total of 47 compounds. In addition, heterocyclic
215 hydrocarbons such as carbazoles and dibenzothiophene and their alkylated congeners including 10 and 8
216 compounds, respectively, were analyzed. This study monitored the presence of 65 petroleum hydrocarbons
217 to characterize their bioaccumulation and the potential toxicity of crude oils. Those petroleum hydrocarbon
218 congeners have demonstrated toxic effects on marine biota, and their occurrence and concentrations have
219 been used as proxies to predict or explain oil toxicity^{3,26,54}.

220

221 During winter exposure (days 0-7) and post-exposure period (days 8-35), levels of total polycyclic aromatic
 222 hydrocarbons (TPAHs), carbazole (CBZ) and dibenzothiophene (DBT) in control mussels were very low
 223 ($<0.5\mu\text{g}\cdot\text{g}^{-1}$) compared to crude oil treatments (Figure 1). The highest bioaccumulation values were seen
 224 after 3 and 7 days of exposure, followed by a gradual decrease after the end of exposure. Mussels exposed
 225 to Heidrun treatment systematically showed the highest values for TPAHs, CBZ and DBT (up to 90% higher)
 226 with maximal concentrations measured during the exposure. The two dilbit treatments showed a similar
 227 bioaccumulation pattern resulting in lower concentrations than Heidrun crude for all analyzed hydrocarbons,
 228 suggesting a potential higher toxicity from the conventional oil than the two diluted bitumen (Figure 1).
 229



230
 231 Figure 1. Bioaccumulated TPAHs ($\mu\text{g}\cdot\text{g}^{-1}$ dw) (A), CBZ and DBT ($\mu\text{g}\cdot\text{g}^{-1}$ dw) (B) in adult mussel whole tissue
 232 during and after winter exposure for the control, the conventional oil and the diluted bitumen treatments.
 233

234 Marine bivalves are filter feeding organisms removing suspended particles from a large volume of seawater
 235 which can be exposed to pollutants through different pathways⁵⁵: passive exposition via the passage of
 236 water through the mantle cavity, food ingestion^{38,56} or passive diffusion at the gill epithelium^{38,57}. As
 237 temperature influences the physiology of bivalves, winter causes a metabolic slowdown in blue mussels
 238^{55,58} along with a lower filtration rate. Because of the reduced energy request coupled with a short exposure
 239 time, exposed mussels could have passively avoided the dissolved hydrocarbon fraction by keeping their
 240 valves firmly closed during the whole or a part of the exposure. Even with low seawater temperatures (-

241 1.44±0.58°C) and ice cover, we observed an accumulation of hydrocarbons from day 0 to day 3 in the
242 tissues of oil-exposed mussels following the different crude treatments. PAHs bioavailability being related
243 to their origin, and physical and chemical properties⁵⁹, different classes of crude oils could induce different
244 bioavailability of compounds in terms of congeners and concentrations. In this study, hydrocarbon
245 bioavailability was certainly different between treatments resulting in lower bioaccumulated values for both
246 dilbits, at least for the targeted hydrocarbons. The conventional oil led to bioaccumulation with values
247 sometimes ten times higher than for the dilbits. Bioaccumulation rate was also faster, with highest values
248 being recorded on the first sampling event, after three days of exposure. Compared to the conventional oil,
249 dilbits contained less compounds of low molecular weight (LMW) and a higher proportion of resins and
250 asphaltenes³. PAHs solubility being strongly influenced by their molecular weight, lower weight compounds
251 are mainly found in the dissolved fraction while higher molecular weight PAHs will tend to bind to particulate
252 and sediments⁴. Therefore, lower bioaccumulation observed with dilbit treatments seems in accordance
253 with their chemical characteristics.

254
255 During the depuration period, bioaccumulated TPAHs, CBZ and DBT gradually decreased during the first
256 month, with specific rate depending on the hydrocarbon group. Regardless of the oil treatment,
257 accumulated TPAHs decreased more rapidly than the CBZ and DBT. During the depuration period,
258 bioaccumulated TPAHs were reduced by 50% after two weeks, while CBZ and DBT had only slightly
259 decreased. After two additional weeks, the depuration rate of TPAHs was slightly reduced compared to the
260 first two weeks while CBZ and DBT were mostly depurated except for the conventional oil. It is known that
261 mussels can exhibit a rapid depuration rate for the first days following hydrocarbons exposure⁵⁵. In this
262 study, this was only the case with the TPAHs concentration in contrast to CBZ and DBT (Table 1).

263
264 Table 1. Tissue bioaccumulation of carbazole (CBZ), dibenzothiophene (DBT) and TPAHs expressed in
265 concentration ($\mu\text{g}\cdot\text{g}^{-1}$ d.w.) and relative importance (%) between measured petroleum hydrocarbons. Values
266 are classed between treatments and sampling time.

	Tissue bioaccumulation	CBZs		DBTs		TPAHs	
		$\mu\text{g g}^{-1}\text{dw}$	%	$\mu\text{g g}^{-1}\text{dw}$	%	$\mu\text{g g}^{-1}\text{dw}$	%
Heidrun	7-day of exposure	0.26 ± 0.01	4.7	0.32 ± 0.01	5.8	4.95 ± 0.03	89.5
	2 weeks post-exposure	0.28 ± 0.01	10.0	0.39 ± 0.01	14.0	2.12 ± 0.04	76.0
	4 weeks post-exposure	*	<1	0.59 ± 0.01	32.6	1.22 ± 0.04	67.4
CLB	7-day of exposure	*	<1	0.16 ± 0.01	12.6	1.22 ± 0.05	88.4
	2 weeks post-exposure	*	<1	0.15 ± 0.01	21.7	0.54 ± 0.03	78.3
	4 weeks post-exposure	*	<1	0.04 ± 0.01	21.1	0.15 ± 0.01	78.9
AWB	7-day of exposure	0.03 ± 0.01	13.5	0.06 ± 0.01	11.1	0.59 ± 0.02	75.3
	2 weeks post-exposure	*	<1	0.04 ± 0.01	13.3	0.26 ± 0.01	86.7
	4 weeks post-exposure	*	<1	*	<1	0.29 ± 0.01	100.0

267

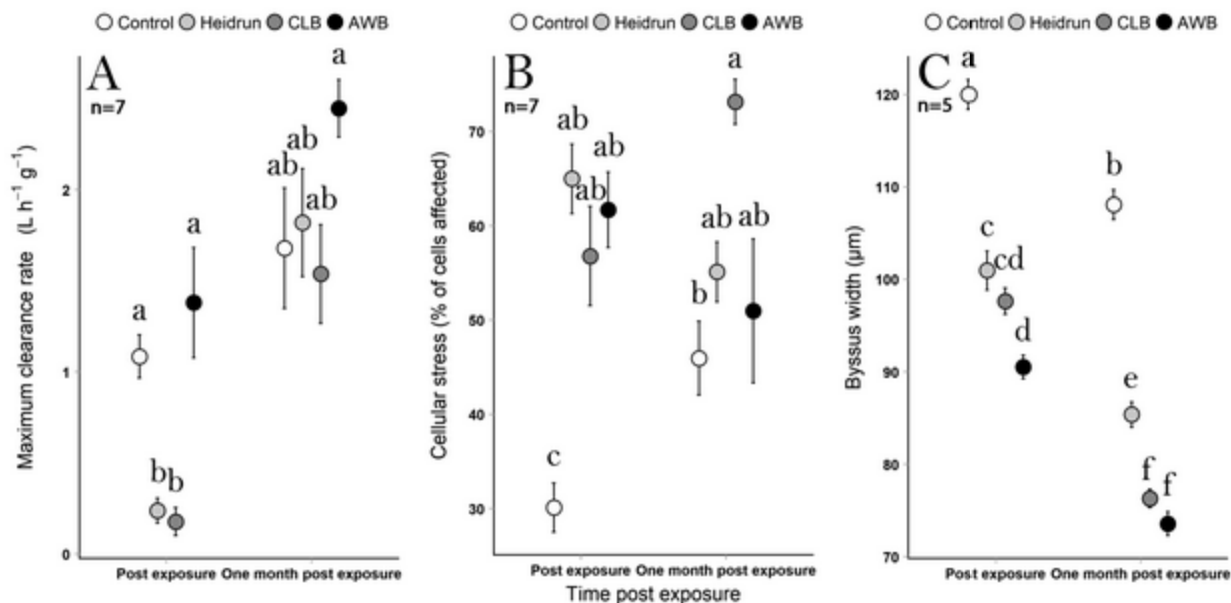
268 * below detection limit

269

270 Physiological integrity of adults

271 Monitoring of the clearance rate (CR) and the scope for growth (SFG), which is used as an energetic index
 272 of filter-feeding animals, were used to assess mussel physiological status^{48,49}. For the SFG and his
 273 integrated metrics, only the clearance rate showed a significant variation after the exposure period with
 274 lower values for CLB and Heidrun treatments (Figure 2A). The recovery of CR after one month, as similar
 275 values between oil treatments and control were observed (Figure 2A), suggests that physiological
 276 performance impairment seems dependent of the targeted biomarker and hydrocarbon depuration³⁷.
 277 Oxygen consumption (overall mean: 0.7205 ± 0.13), assimilation (overall mean: 89.87 ± 14.63) and SFG
 278 (overall mean: -7.60 ± 0.79) were not significantly impacted between treatments and time. These diverse
 279 SFG metrics indicate that adult mussels showed a good overall physiological resistance to a short-term
 280 petroleum hydrocarbon exposure. Time and concentration of hydrocarbon exposure are key characteristics
 281 in the bivalves response. When a low level of PAHs exposure is extended, damage to metabolism could
 282 be as severe as individuals exposed to high levels of PAHs⁶⁰. Diminution of CR induced by contaminants
 283 or PAHs exposure had already been reported^{47,61}. Widdows and Johnson⁴⁹ also observed a relationship
 284 between declining CR and increasing concentration of aromatic hydrocarbons in the body tissues of *Mytilus*
 285 *edulis*, but their lower concentration induced no variation of CR. This dose dependence adjustment of the
 286 CR was also recorded in the present study, as the bioaccumulation magnitude increased in the following
 287 order: AWB < CLB < Heidrun. An increased CR could be due to depuration purpose⁶¹, but it remains unclear
 288 if the physiological reaction of slowing down the CR is induced by a variation of ciliary activity due to narcotic
 289 effects of PAHs⁶², or if it is a biological response to minimize intrusion of PAHs^{60,61}.

290



291
 292 Figure 2. Maximum clearance rate (L.h⁻¹.g⁻¹) (A), cellular stress (% of affected cells) (B) and byssus
 293 thickness (μm) (C) immediately after the exposure (within 12h) and one month later for the control, the
 294 conventional oil and the diluted bitumen treatments. Mean ± SE. Different letters over each mean indicate
 295 significant statistical differences between treatment and time (p<0.05).

296
 297 Cellular stress

298 Immediately after the exposure, cellular stress was higher in the three oil treatments when compared to the
 299 control (Figure 2B). Significant differences were not observed one month after the exposure while the
 300 control kept the lowest cellular stress mean of all treatments (Treatment×Time, DF=3 and 47, F=5.883,
 301 p=0.0017). Lysosomal stability (cellular stress) has been classified as a useful and efficient screening
 302 technique able to discriminate between polluted and clean sites, relying on its capacity to respond to
 303 chemical challenges⁶³ and oil exposure⁶⁴. Lysosomal activity being directly related to immune activity in
 304 bivalves, its effectiveness is vital to protect the animals against diseases. Impaired lysosomal activities can
 305 potentially induce adverse effects, such as histopathological, developmental, and reproductive
 306 abnormalities or worst mortality and population decline^{63,64}. Lipophilic compounds, as PAHs, will likely enter
 307 the lipid bilayers impacting the membrane permeability and fluidity⁶⁵. When *Mytilus edulis* were exposed
 308 to phenanthrene, destabilizing effects on the lysosomal membrane seemed to be triggered by a critical
 309 concentration accumulated by lysosomes⁶⁵. In *Crassostera gigas* exposed to water accommodated fraction
 310 (WAF) of petroleum hydrocarbons, genes related to immune system were down regulated, showing
 311 potential immunosuppression⁶⁶. This can explain the significant lysosomal destabilization observed right

312 after the exposure opposed to the absence of response one month later, when the mussels have already
313 eliminated more than half of their accumulated hydrocarbons. Like the clearance rate, no more significant
314 effects from oil exposure were visible one month after exposure (Figure 2B).

315

316 Byssus thickness

317 Byssus thread diameters showed significantly lower values for each oil treatment compared to control, with
318 diameters over 10% smaller with the AWB, the most impacted treatment (Figure 2C). After one-month,
319 negative impacts of oil treatments are still present except that the most impacted treatments were CLB and
320 AWB with byssus thread diameter over 25% lower than the control (TreatmentxTime, DF=6 and 1788,
321 $F=11.08$, $p<0.001$) (Figure 2B). Byssus secretion is a dynamic process influenced by both exogenous and
322 endogenous factors ^{67,68,62} and byssal thread production can represent over 10% of a mussel's monthly
323 energy expenditure ⁶⁹. A decrease in byssal thickness could indicate a potential individual energy trade-off
324 towards more important metabolic pathways potentially related to hydrocarbons depuration. As byssus
325 thickness morphology secreted under different endogenous conditions is the major parameter to explain
326 variability in attachment force ⁶⁷ tinier byssal thread can increase mussel detachments. Considering that a
327 winter oil spill already causes higher energy demands in a harsh period of the year, production of new
328 byssus threads could worsen physiological integrity of mussels.

329

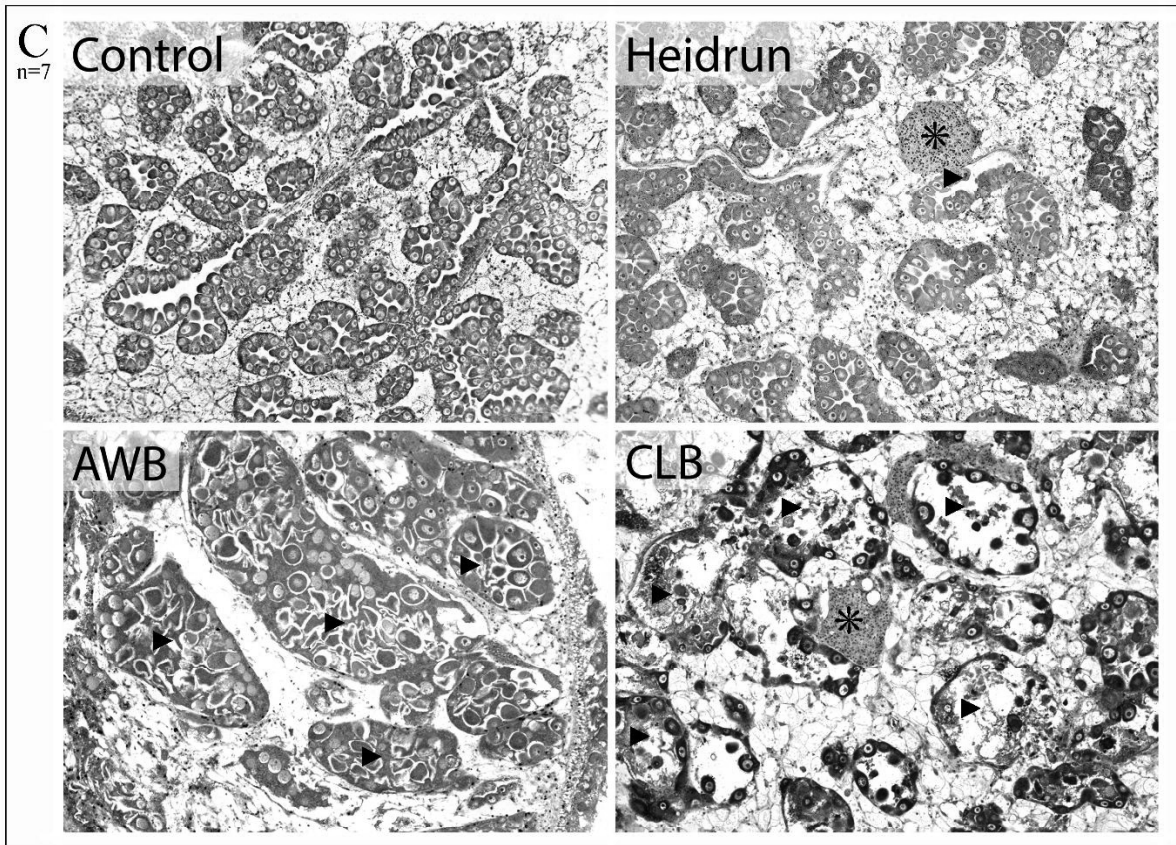
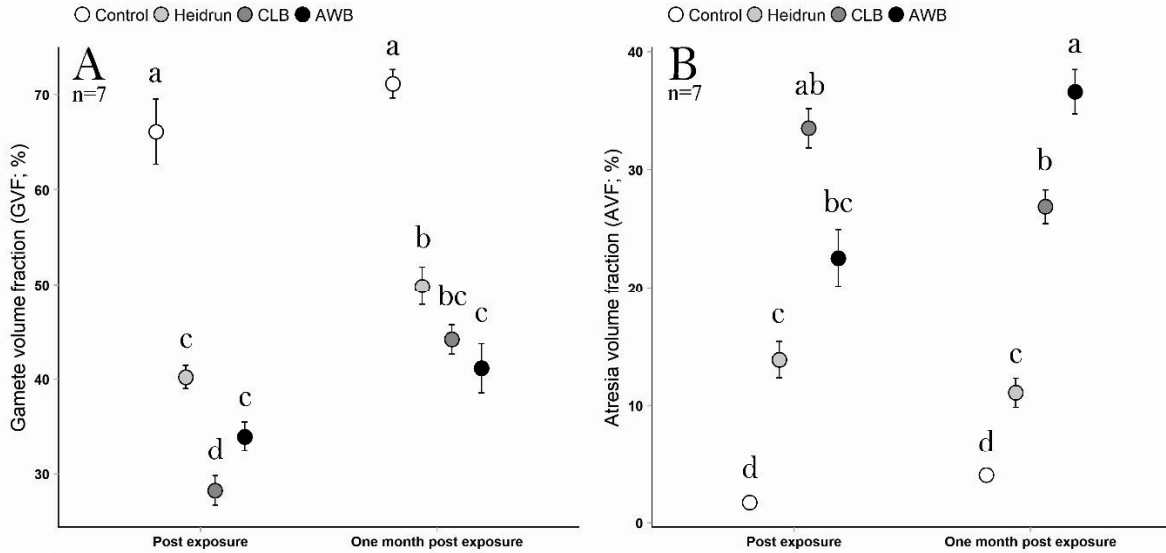
330 Overall, adult physiology biomarkers showed limited effects of oil immediately after the exposure with a
331 generally good resilience during the first month post-exposure, concomitantly with effective tissue
332 depuration. Even mortality (results not shown) wasn't strong with death toll never exceeding 15% in each
333 treatment. Despite significant negative effects of oil exposure immediately after the exposure for some
334 biomarkers, negative impacts generally disappeared at the end of the depuration month, except for the
335 diameter of byssus produced. Even with higher bioaccumulation for conventional oil compared to dilbit
336 treatments, no difference on physiological impacts were present between crude oils. Therefore, in
337 accordance with bioaccumulation values, diluted bitumen did not seem to induce strong toxic effects at the
338 physiological level.

339

340 Monitoring of breeding metrics

341 The gamete volume fraction (GVF) indicator (Figure 3A) showed the highest values in mussels from the
342 control treatment. Mussels exposed to oil treatments displayed lower GVF values, with means all under
343 50% without full recovery after one month (Figure 3A). Immediately after the exposure, mussels from the

344 CLB treatment showed the lowest one and mussels from the CLB and AWB treatments showed the lower
345 values one month later (TreatmentxTime, DF=3 and 340, F=4.062, p=0.00742). The atresia volume fraction
346 (AVF) (Figure 3B) indicator were very low in the control (<4%) and significantly higher in oil treatments
347 (Figure 3B) with dilbits showing means over 22% higher after the exposure and one month later
348 (TreatmentxTime, DF=3 and 340, F=14.41, p<0.001) (Figure 3B). Microscopy observation of gonad cross
349 sections gives a great insight of oil exposure effects on gametogenesis (Figure 3C). For control gonads,
350 follicles and individual oocytes displayed normal development with low occurrence of atretic oocytes. In
351 contrast, oil-exposed female mussels showed high gonad atresia level (†) with hemocyte infiltration (*) in
352 the gametic tissue. AWB mussels displayed early stage atretic oocytes while CLB mussels showed late
353 stage atretic oocytes mainly already degraded, as observed after the 7-day exposure (Figure 3C).
354



355
 356 Figure 3. Gamete volume fraction (%) (A), atresia volume fraction (%) (B), and female gonads cross section
 357 (400X) (C). Female gonad cross sections are from samples obtained immediately after the exposure (within
 358 12h). Hematoxylin and eosin (Ehrlich solution) staining, section of 5µm. Atresia is identified by an arrow

359 head “▶” and hemocyte infiltration by a star symbol “*”. Mean ± SE. Different letters over each mean
360 indicate significant statistical difference between treatment and time ($p < 0.05$).

361

362

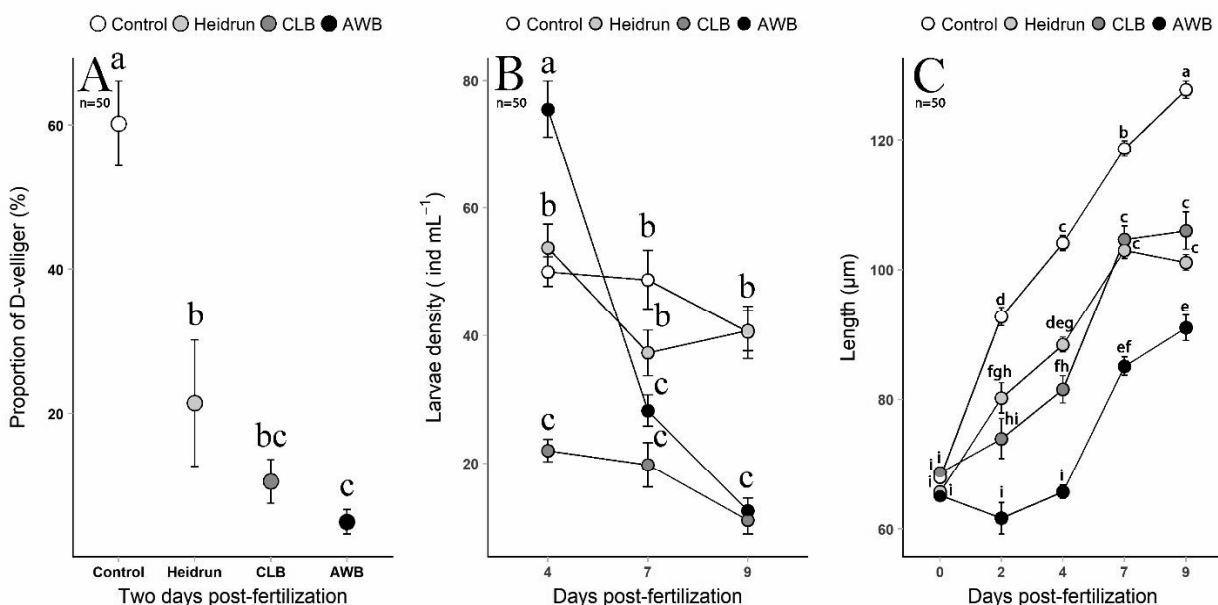
363 While adult mussels showed a good physiological resilience to a 7-day winter exposure, ecological
364 resilience seems strongly at risk. Omnipresence of oocyte atresia, sometimes over 40%, coupled with the
365 low proportion of viable oocytes showed important toxic effects of oil spill exposure on gametogenesis.
366 Bivalves histological analysis demonstrated to be a useful tool to assess ecotoxicity in bivalves exposed to
367 polluted environment^{44,70}. Inflammation, necrosis and atrophy of gonadal cells were some of the effects
368 measured in *Ostrea edulis* and *Crassostrea gigas* exposed to a crude oil spill⁷¹. Multiple toxic effects in
369 *Mytilus edulis* have also been recorded as haemocytic infiltration of follicles, severe oocyte atresia or
370 neoplasia^{44,45,70,72,73}. Atresia in female gonad is triggered when spawning copes with harsh environmental
371 conditions after gamete ripening occurs and is associated with over-maturation of gametes leading to the
372 end of gametogenic cycle, degeneration and resorption of gonadal tissue⁷⁰. In *Crassostera gigas*, WAF of
373 petroleum hydrocarbons has been link to 22 sub-expressed genes linked to gonad maturation⁶⁶. In our
374 study, the winter oil exposure rapidly impacted gonad integrity and maturation process. Even with the good
375 physiological resilience shown by exposed adult mussels, a significant increase in oocyte atresia was
376 present for the conventional oil and was even stronger for dilbits. Gonad tissue being used as energy
377 storage for mussels, oocyte atresia can be a useful way to relocate energy where most needed. An
378 unexpected oil exposure and the subsequent depuration activities could have induced higher energy
379 demands in a period of food scarcity, therefore inducing gonad atresia. In this case, the adult mussels
380 “choose” to maintain their own physiological integrity at the expense of reproduction. The gonad biomarker
381 is therefore the really first indicator of potential transgenerational effects, as genitors re-use energy stocked
382 under gonad form, the next mussel generation is put at risk.

383

384 Unexposed larvae (F1) produced by exposed genitors (F0)

385 The proportion of D-veliger larvae found two days post-fertilization was the highest in control mussels with
386 a mean of 60% compared to all oil treatments with means value below 25%. Mussels from the AWB
387 treatment produced the lowest proportion of D-veliger larvae with 4.9% (Treatment, DF=3 and 12, $F=15.82$,
388 $p=0.00018$) (Figure 4A). During their development until day 9 post-fertilization, control and Heidrun
389 treatments larvae showed higher final larval density opposed to dilbit treatments. After nine days of
390 development, no significant difference was found between the control and the Heidrun treatment ($p=1$) and

391 between the two diluted bitumen treatments ($p=1$) while both groups showed a significant difference
 392 (Treatment \times Time, DF=6 and 36, $F=18.55$, $p<0.001$) (Figure 4B). Considering the larval size progression
 393 from fertilization until day 9 post-fertilization, controls showed the greatest size growth with a regular
 394 increase over time. Larvae from oil treatments showed a step-like progression with no significant
 395 differences, inside the same treatment, between sampling days 0-2, 2-4 and 7-9, except for the Heidrun
 396 treatment between day 0-2. The only significant progression inside a same oil treatment was between day
 397 4-7 (Treatment \times Time, DF= 12 and 2198, $F= 23.19$, $p<0.001$) (Figure 4C).
 398



399
 400
 401 Figure 4. Proportion (%) of larvae at D-veliger stage, two days post-fertilization (A), larvae density (larvae
 402 mL⁻¹) at days 4, 7 and 9 post-fertilization (B) and larvae size growth (μm) from fertilization to nine days post-
 403 fertilization (C) for the control, the conventional oil and the diluted bitumen treatments. Mean \pm SE. Different
 404 letters over each mean indicate significant statistical differences between treatment and time ($p < 0.05$).
 405

406 Embryogenesis, larval survival and growth were hardly impacted by oil treatment with larvae size lagging
 407 five days behind the control treatment after nine days. Those strong effects of oil exposure, and particularly
 408 of dilbits, on gonad maturation several weeks before spawning, support the hypothesis of strong
 409 transgenerational effects of a winter oil exposure under ice cover. Studies have already shown negative
 410 effects following PAHs exposure of gametes or growing larvae showing strong embryotoxicity⁷⁴⁻⁷⁶.
 411 However, in this study, gametes or larvae have never been directly exposed to any kind of petroleum

412 hydrocarbons. The only justification to the toxicity observed in the F1 larvae is through parental inheritance.
413 Observed impacts can therefore results from weakened energy reserves in eggs or maternal contaminant
414 transfer. Food-stressed mussels have been shown to produce lower quality larvae with increased
415 developmental abnormalities, diminished survival and growth rate potentially due to a significantly collapse
416 of energy inheritance^{77,78}. Therefore, the energy trade-off observed in adult mussels after their exposure
417 to crude oil to assure their individual integrity seems to have reduced the energy passed on to the F1 larvae
418 generation. PAHs have been proved to accumulate in fish and copepod eggs, due to their high content in
419 lipids, and being transferred to offspring^{79,80}. Specific hydrocarbon congener (phenanthrene) has also been
420 linked to maternal transfer and photo-toxicity in larvae produced by exposed breeders of *Mulina lateralis*⁸¹.
421 PAHs are also known for their genotoxicity potential on bivalve embryos exposed to dissolved fraction,
422 inducing strong DNA strand breakage even at low concentration⁸².

423
424 Regardless the harsh abiotic conditions mussels can be exposed to during wintertime, they must
425 adequately balance their energy budget to allow gametogenesis to start as soon as possible to ensure
426 reproductive success. In this study, we highlight a cascade effect from the winter exposure and gonadal
427 impairments followed by lower gamete production and impaired larval metamorphosis, survival and growth
428 showing the potentially disastrous long-term consequences that a brief oil spill can induce on natural
429 populations. Essentially, a light (1:1000 crude oil:seawater) and short (7-day exposure) oil exposure during
430 winter under an ice cover induced higher bioaccumulation of measured hydrocarbons for conventional oil
431 compare to diluted bitumen. A fast depuration rate was obvious in the first month post exposure in the case
432 of TPAHs while CBZ and DBT were slower to be excreted. Even with important bioaccumulation of
433 petroleum hydrocarbons in the tissues of mussels, the physiological resilience of adults was strong with still
434 some negative effects on some biomarkers disappearing in the first month. At this point, if it was not for the
435 strong negative effects on gonad maturation, based on bioaccumulated values and mussel physiological
436 integrity, we had assumed that diluted bitumen were as toxic as conventional oils. Then, several weeks
437 after the winter oil spill, the breeding was induced, and the true toxic potential of diluted bitumen was
438 observed on every single reproductive biomarker measured.

439
440 However, based on the monitoring of targeted 16 PAHs, their alkylated congeners in addition to heterocyclic
441 hydrocarbons such as CBZ, DBT and their alkylated congeners were not enough to explain the observed
442 high toxicity. Novel unconventional oil products, such as diluted bitumen, possess differential chemical
443 composition and complexity, compared to conventional crude oil. In addition to significant amount of

444 unresolved complex mixture (UCMs), diluent is considered to enhance and complexify the LMW
445 hydrocarbon fractions ⁸³ surely affecting both dissolved bioavailable compounds and, inevitably, their
446 toxicity. Also, we found essential to target a wider time frame to measure the strong toxic effects on
447 ecosystem integrity. Upcoming research on diluted bitumen should therefore include a wider range
448 monitoring of potential toxic compounds in a longer sampling time frame including genotoxicity, maternal
449 transfer and transgenerational effect biomarkers.

450

451 AUTHOR INFORMATION

452 **Corresponding Author**

453 *E-mail: anthony_schmutz@uqar.ca or anthony-schmutz@gmail.com

454

455 **Funding Sources**

456 The authors greatly thanks Fisheries and Oceans Canada and the National Contaminants Advisory
457 Group (NCAG) for funding support.

458 ACKNOWLEDGMENT

459 The authors would like to thank Mataelle Onapin, Nathalie Gauthier and Nathalie Morin for their important
460 help during winter sampling and related analysis.

461

462 REFERENCES

- 463
- 464 (1) Hein, F. J. Geology of Bitumen and Heavy Oil: An Overview. *J. Pet. Sci. Eng.* **2017**,
465 *154* (November 2016), 551–563; DOI 10.1016/j.petrol.2016.11.025.
- 466 (2) Crosby, S.; Fay, R.; Groark, C.; Kani, A.; Smith, J.; Sullivan, T. Transporting
467 Alberta's Oil Sands Products: Defining the Issues and Assessing the Risks. *NOAA*
468 *Tech. Memo. NOS OR&R 44* **2013**, No. September, 153.
- 469 (3) Alsaadi, F.; Hodson, P. V.; Langlois, V. S. An Embryonic Field of Study: The Aquatic
470 Fate and Toxicity of Diluted Bitumen. *Bull. Environ. Contam. Toxicol.* **2017**, *100* (1),
471 1–6; DOI 10.1007/s00128-017-2239-7.
- 472 (4) Dupuis, A.; Ucan-Marin, F. A Literature Review on the Aquatic Toxicology of
473 Petroleum Oil: An Overview of Oil Properties and Effects to Aquatic Biota. *DFO*
474 *Can. Sci. Advis. Secr. Res. Doc.* **2015**, *2015/007* (April), 51.
- 475 (5) King, T.; Robinson, B.; McIntyre, C.; Toole, P.; Ryan, S.; Saleh, F.; Boufadel, M.
476 C.; Lee, K. Fate of Surface Spills of Cold Lake Blend Diluted Bitumen Treated with
477 Dispersant and Mineral Fines in a Wave Tank. *Environ. Eng. Sci.* **2015**, *32* (3), 250–
478 261; DOI 10.1089/ees.2014.0459.
- 479 (6) King, T. L.; Robinson, B.; Boufadel, M.; Lee, K. Flume Tank Studies to Elucidate
480 the Fate and Behavior of Diluted Bitumen Spilled at Sea. *Mar. Pollut. Bull.* **2014**, *83*
481 (1), 32–37; DOI 10.1016/j.marpolbul.2014.04.042.
- 482 (7) Green, S. J.; Demes, K.; Arbeider, M.; Palen, W. J.; Salomon, A. K.; Sisk, T. D.;
483 Webster, M.; Ryan, M. E. Oil Sands and the Marine Environment: Current
484 Knowledge and Future Challenges. *Front. Ecol. Environ.* **2017**, *15* (2), 74–83; DOI
485 10.1002/fee.1446.
- 486 (8) Yang, M.; Khan, F.; Garaniya, V.; Chai, S. Multimedia Fate Modeling of Oil Spills in
487 Ice-Infested Waters: An Exploration of the Feasibility of Fugacity-Based Approach.
488 *Process Saf. Environ. Prot.* **2015**, *93* (May), 206–217; DOI

- 489 10.1016/j.psep.2014.04.009.
- 490 (9) Brandvik, P. J.; Faksness, L. G. Weathering Processes in Arctic Oil Spills: Meso-
491 Scale Experiments with Different Ice Conditions. *Cold Reg. Sci. Technol.* **2009**, *55*
492 (1), 160–166; DOI 10.1016/j.coldregions.2008.06.006.
- 493 (10) Hannam, M. L.; Bamber, S. D.; Moody, A. J.; Galloway, T. S.; Jones, M. B.
494 Ecotoxicology and Environmental Safety Immunotoxicity and Oxidative Stress in
495 the Arctic Scallop *Chlamys Islandica*: Effects of Acute Oil Exposure. *Ecotoxicol.*
496 *Environ. Saf.* **2010**, *73* (6), 1440–1448; DOI 10.1016/j.ecoenv.2010.06.012.
- 497 (11) Yang, S. Z.; Jin, H. J.; Wei, Z.; He, R. X.; Ji, Y. J.; Li, X. M.; Yu, S. P. Bioremediation
498 of Oil Spills in Cold Environments: A Review. *Pedosphere* **2009**, *19* (3), 371–381;
499 DOI 10.1016/S1002-0160(09)60128-4.
- 500 (12) Atlas, R. M.; Horowitz, A.; Busdosh, M. Prudhoe Crude Oil in Arctic Marine Ice,
501 Water, and Sediment Ecosystems: Degradation and Interactions with Microbial and
502 Benthic Communities. *J. Fish. Res. Board Canada* **1978**, *35* (5), 585–590; DOI
503 10.1139/f78-104.
- 504 (13) Faksness, L. G.; Brandvik, P. J. Distribution of Water Soluble Components from Oil
505 Encapsulated in Arctic Sea Ice: Summary of Three Field Seasons. *Cold Reg. Sci.*
506 *Technol.* **2008**, *54* (2), 106–114; DOI 10.1016/j.coldregions.2008.03.006.
- 507 (14) Ortmann, A. C.; Cobanli, S. E.; Wohlgeschaffen, G.; MacDonald, J.; Gladwell, A.;
508 Davis, A.; Robinson, B.; Mason, J.; King, T. L. Measuring the Fate of Different
509 Diluted Bitumen Products in Coastal Surface Waters. *Mar. Pollut. Bull.* **2020**, *153*
510 (February); DOI 10.1016/j.marpolbul.2020.111003.
- 511 (15) Lee, K.; Boufadel, M.; Chen, B.; Foght, J.; Hodson, P.; Swanson, S.; Venosa, A.
512 The Behaviour and Environmental Impacts of Crude Oil Released into Aqueous
513 Environments. *R. Soc. Canada Expert Panel* **2015**, No. November, 489; DOI 978-
514 1-928140-02-3.
- 515 (16) Yang, Z.; Hollebhone, B. P.; Brown, C. E.; Yang, C.; Wang, Z.; Zhang, G.; Lambert,

- 516 P.; Landriault, M.; Shah, K. The Photolytic Behavior of Diluted Bitumen in Simulated
517 Seawater by Exposed to the Natural Sunlight. *Fuel* **2016**, *186*, 128–139; DOI
518 10.1016/j.fuel.2016.08.068.
- 519 (17) Hua, Y.; Mirnaghi, F. S.; Yang, Z.; Hollebone, B. P.; Brown, C. E. Effect of
520 Evaporative Weathering and Oil-Sediment Interactions on the Fate and Behavior
521 of Diluted Bitumen in Marine Environments. Part 1. Spill-Related Properties, Oil
522 Buoyancy, and Oil-Particulate Aggregates Characterization. *Chemosphere* **2018**,
523 *191*, 1038–1047; DOI 10.1016/j.chemosphere.2017.10.156.
- 524 (18) Johannessen, S. C.; Greer, C. W.; Hannah, C. G.; King, T. L.; Lee, K.; Pawlowicz,
525 R.; Wright, C. A. Fate of Diluted Bitumen Spilled in the Coastal Waters of British
526 Columbia , Canada. *Mar. Pollut. Bull.* **2020**, No. October 2019, 110691; DOI
527 10.1016/j.marpolbul.2019.110691.
- 528 (19) Philibert, D. A.; Philibert, C. P.; Lewis, C.; Tierney, K. B. Comparison of Diluted
529 Bitumen (Dilbit) and Conventional Crude Oil Toxicity to Developing Zebrafish.
530 *Environ. Sci. Technol.* **2016**, *50*(11), 6091–6098; DOI 10.1021/acs.est.6b00949.
- 531 (20) Barron, M. G.; Conmy, R. N.; Holder, E. L.; Meyer, P.; Wilson, G. J.; Principe, V.
532 E.; Willming, M. M. Toxicity of Cold Lake Blend and Western Canadian Select
533 Dilbits to Standard Aquatic Test Species. *Chemosphere* **2018**, *191*, 1–6; DOI
534 10.1016/j.chemosphere.2017.10.014.
- 535 (21) Madison, B. N.; Hodson, P. V.; Langlois, V. S. Diluted Bitumen Causes Deformities
536 and Molecular Responses Indicative of Oxidative Stress in Japanese Medaka
537 Embryos. *Aquat. Toxicol.* **2015**, *165*, 222–230; DOI
538 10.1016/j.aquatox.2015.06.006.
- 539 (22) Lara-Jacobo, L. R.; Willard, B.; Wallace, S. J.; Langlois, V. S. Cytochrome P450 1A
540 Transcript Is a Suitable Biomarker of Both Exposure and Response to Diluted
541 Bitumen in Developing Frog Embryos. *Environ. Pollut.* **2019**, *246*, 501–508; DOI
542 10.1016/j.envpol.2018.12.039.

- 543 (23) Robidoux, P. Y.; Virginie, B.; Judith, L.; Marc, D. Assessment of Acute and Chronic
544 Toxicity of Unweathered and Weathered Diluted Bitumen to Freshwater Fish and
545 Invertebrates. *Ecotoxicol. Environ. Saf.* **2018**, *164* (July), 331–343; DOI
546 10.1016/j.ecoenv.2018.08.010.
- 547 (24) McDonnell, D.; Madison, B. N.; Baillon, L.; Wallace, S. J.; Brown, S. R.; Hodson, P.
548 V.; Langlois, V. S. Comparative Toxicity of Two Diluted Bitumens to Developing
549 Yellow Perch (*Perca Flavescens*). *Sci. Total Environ.* **2019**, *655*, 977–985; DOI
550 10.1016/j.scitotenv.2018.11.199.
- 551 (25) Cederwall, J.; Black, T. A.; Blais, J. M.; Hanson, M. L.; Hollebhone, B. P.; Palace, V.
552 P.; Rodríguez-Gil, J. L.; Greer, C. W.; Maynard, C.; Ortmann, A. C.; Rooney, R. C.;
553 Orihel, D. M. Life under an Oil Slick: Response of a Freshwater Food Web to
554 Simulated Spills of Diluted Bitumen in Field Mesocosms. *Can. J. Fish. Aquat. Sci.*
555 **2020**, *77*(5), 779–788; DOI 10.1139/cjfas-2019-0224.
- 556 (26) Alderman, S. L.; Lin, F.; Farrell, A. P.; Kennedy, C. J.; Gillis, T. E. Effects of Diluted
557 Bitumen Exposure on Juvenile Sockeye Salmon: From Cells to Performance.
558 *Environ. Toxicol. Chem.* **2017**, *36*(2), 354–360; DOI 10.1002/etc.3533.
- 559 (27) Alderman, S. L.; Dilkumar, C. M.; Avey, S. R.; Farrell, A. P.; Kennedy, C. J.; Gillis,
560 T. E. Effects of Diluted Bitumen Exposure and Recovery on the Seawater
561 Acclimation Response of Atlantic Salmon Smolts. *Aquat. Toxicol.* **2020**, *221*
562 (September 2019), 105419; DOI 10.1016/j.aquatox.2020.105419.
- 563 (28) Avey, S. R.; Kennedy, C. J.; Farrell, A. P.; Gillis, T. E.; Alderman, S. L. Effects of
564 Diluted Bitumen Exposure on Atlantic Salmon Smolts: Molecular and Metabolic
565 Responses in Relation to Swimming Performance. *Aquat. Toxicol.* **2020**, *221*
566 (September 2019), 105423; DOI 10.1016/j.aquatox.2020.105423.
- 567 (29) Adams, J. E.; Madison, B. N.; Charbonneau, K.; Sereneo, M.; Baillon, L.; Langlois,
568 V. S.; Brown, R. S.; Hodson, P. V. Effects on Trout Alevins of Chronic Exposures
569 to Chemically-dispersed Access Western Blend and Cold Lake Blend Dilbits.
570 *Environ. Toxicol. Chem.* **2020**, No. December 2019; DOI 10.1002/etc.4747.

- 571 (30) Lin, F.; Osachoff, H. L.; Kennedy, C. J. Physiological Disturbances in Juvenile
572 Sockeye Salmon (*Oncorhynchus Nerka*) Exposed to the Water-Soluble Fraction of
573 Diluted Bitumen. *Aquat. Toxicol.* **2020**, *220*, 105383; DOI
574 10.1016/j.aquatox.2019.105383.
- 575 (31) Camus, L.; Brooks, S.; Geraudie, P.; Hjorth, M.; Nahrgang, J.; Olsen, G. H.; Smit,
576 M. G. D. Comparison of Produced Water Toxicity to Arctic and Temperate Species.
577 *Ecotoxicol. Environ. Saf.* **2015**, *113*, 248–258; DOI 10.1016/j.ecoenv.2014.12.007.
- 578 (32) Beyer, J.; Green, N. W.; Brooks, S.; Allan, I. J.; Ruus, A.; Gomes, T.; Bråte, I. L. N.;
579 Schøyen, M. Blue Mussels (*Mytilus Edulis* Spp.) as Sentinel Organisms in Coastal
580 Pollution Monitoring: A Review. *Mar. Environ. Res.* **2017**, *130*, 338–365; DOI
581 10.1016/j.marenvres.2017.07.024.
- 582 (33) Kasiotis, K. M.; Emmanouil, C. Advanced PAH Pollution Monitoring by Bivalves.
583 *Environ. Chem. Lett.* **2015**, *13*(4), 395–411; DOI 10.1007/s10311-015-0525-3.
- 584 (34) Cusson, M.; Tremblay, R.; Daigle, G.; Roussy, M. Modeling the Depuration
585 Potential of Blue Mussels (*Mytilus* Spp.) in Response to Thermal Shock.
586 *Aquaculture* **2005**, *250*(1–2), 183–193; DOI 10.1016/j.aquaculture.2005.03.045.
- 587 (35) Lemaire, N.; Pellerin, J.; Fournier, M.; Girault, L.; Tamigneaux, E.; Cartier, S.;
588 Pelletier, E. Seasonal Variations of Physiological Parameters in the Blue Mussel
589 *Mytilus* Spp. from Farm Sites of Eastern Quebec. *Aquaculture* **2006**, *261*(2), 729–
590 751; DOI 10.1016/j.aquaculture.2006.08.017.
- 591 (36) Baussant, T.; Ortiz-Zarragoitia, M.; Cajaraville, M. P.; Bechmann, R. K.; Taban, I.
592 C.; Sanni, S. Effects of Chronic Exposure to Dispersed Oil on Selected
593 Reproductive Processes in Adult Blue Mussels (*Mytilus Edulis*) and the
594 Consequences for the Early Life Stages of Their Larvae. *Mar. Pollut. Bull.* **2011**, *62*
595 (7), 1437–1445; DOI 10.1016/j.marpolbul.2011.04.029.
- 596 (37) Widdows, J.; Bakke, T.; Bayne, B. L.; Donkin, P.; Livingstone, D. R.; Lowe, D. M.;
597 Moore, M. N.; Evans, S. V.; Moore, S. L. Responses of *Mytilus Edulis* on Exposure

- 598 to the Water-Accommodated Fraction of North Sea Oil. *Mar. Biol.* **1982**, *67*(1), 15–
599 31; DOI 10.1007/BF00397090.
- 600 (38) Redmond, K. J.; Berry, M.; Sanni, S.; Andersen, O. K. Effect of Dispersed Crude
601 Oil on the Feeding Activity, Retention Efficiency, and Filtration Rate of Differently
602 Sized Blue Mussels (*Mytilus Edulis*). *J. Toxicol. Environ. Heal. - Part A Curr. Issues*
603 **2016**, *79*(13–15), 658–674; DOI 10.1080/15287394.2016.1171996.
- 604 (39) González-Fernández, C.; Lacroix, C.; Paul-Pont, I.; Le Grand, F.; Albentosa, M.;
605 Bellas, J.; Viñas, L.; Campillo, J. A.; Hegaret, H.; Soudant, P. Effect of Diet Quality
606 on Mussel Biomarker Responses to Pollutants. *Aquat. Toxicol.* **2016**, *177*, 211–
607 225; DOI 10.1016/j.aquatox.2016.05.027.
- 608 (40) Sureda, A.; Box, A.; Tejada, S.; Blanco, A.; Caixach, J.; Deudero, S. Biochemical
609 Responses of *Mytilus Galloprovincialis* as Biomarkers of Acute Environmental
610 Pollution Caused by the Don Pedro Oil Spill (Eivissa Island, Spain). *Aquat. Toxicol.*
611 **2011**, *101*(3–4), 540–549; DOI 10.1016/j.aquatox.2010.12.011.
- 612 (41) Pérez-Cadahia, B.; Laffon, B.; Eduardo, P.; Méndez, J. Evaluation of PAH
613 Bioaccumulation and DNA Damage in Mussels (*Mytilus Galloprovincialis*) Exposed
614 to Spilled Prestige Crude Oil. *Comp. Biochem. Physiol. - C Toxicol. Pharmacol.*
615 **2004**, *138*(4), 453–460; DOI 10.1016/j.cca.2004.08.001.
- 616 (42) Baussant, T.; Bechmann, R. K.; Taban, I. C.; Larsen, B. K.; Tandberg, A. H.;
617 Bjørnstad, A.; Torgrimsen, S.; Nævdal, A.; Øysæd, K. B.; Jonsson, G.; Sanni, S.
618 Enzymatic and Cellular Responses in Relation to Body Burden of PAHs in Bivalve
619 Molluscs: A Case Study with Chronic Levels of North Sea and Barents Sea
620 Dispersed Oil. *Mar. Pollut. Bull.* **2009**, *58*(12), 1796–1807; DOI
621 10.1016/j.marpolbul.2009.08.007.
- 622 (43) Ruiz, Y.; Suarez, P.; Alonso, A.; Longo, E.; Villaverde, A.; San Juan, F.
623 Environmental Quality of Mussel Farms in the Vigo Estuary: Pollution by PAHs,
624 Origin and Effects on Reproduction. *Environ. Pollut.* **2011**, *159*(1), 250–265; DOI
625 10.1016/j.envpol.2010.08.031.

- 626 (44) Aarab, N.; Godal, B. F.; Bechmann, R. K. Seasonal Variation of Histopathological
627 and Histochemical Markers of PAH Exposure in Blue Mussel (*Mytilus Edulis* L.).
628 *Mar. Environ. Res.* **2011**, *71* (3), 213–217; DOI 10.1016/j.marenvres.2011.01.005.
- 629 (45) Ortiz-Zarragoitia, M.; Garmendia, L.; Barbero, M. C.; Serrano, T.; Marigómez, I.;
630 Cajaraville, M. P. Effects of the Fuel Oil Spilled by the Prestige Tanker on
631 Reproduction Parameters of Wild Mussel Populations. *J. Environ. Monit.* **2011**, *13*,
632 84–94; DOI 10.1039/c0em00102c.
- 633 (46) Labarta, U.; Fernández-Reiriz, M. J.; Garrido, J. L.; Babarro, J. M. F.; Bayona, J.
634 M.; Albaigés, J. Response of Mussel Recruits to Pollution from the “Prestige” Oil
635 Spill along the Galicia Coast. A Biochemical Approach. *Mar. Ecol. Prog. Ser.* **2005**,
636 *302*, 135–145; DOI 10.3354/meps302135.
- 637 (47) Toro, B.; Navarro, J. M.; Palma-Fleming, H. Use of Clearance Rate in *Choromytilus*
638 *Chorus* (Bivalvia: Mytilidae) as a Non-Destructive Biomarker of Aquatic Pollution.
639 *Rev. Chil. Hist. Nat.* **2003**, *76* (2), 267–274; DOI 10.4067/S0716-
640 078X2003000200011.
- 641 (48) Tremblay, R.; Myrand, B.; Sevigny, J. M.; Blier, P.; Guderley, H. Bioenergetic and
642 Genetic Parameters in Relation to Susceptibility of Blue Mussels, *Mytilus Edulis* (L.)
643 to Summer Mortality. *J. Exp. Mar. Bio. Ecol.* **1998**, *221* (1), 27–58; DOI
644 10.1016/S0022-0981(97)00114-7.
- 645 (49) Widdows, J.; Johnson, D. Physiological Energetics of *Mytilus Edulis*: Scope for
646 Growth. *Mar. Ecol.* **1988**, *46*, 113–121; DOI 10.3354/meps046113.
- 647 (50) Pernet, F.; Tremblay, R.; Redjah, I.; Sevigny, J.-M.; Gionet, C. Physiological and
648 Biochemical Traits Correlate with Differences in Growth Rate and Temperature
649 Adaptation among Groups of the Eastern Oyster *Crassostrea Virginica*. *J. Exp. Biol.*
650 **2008**, *211* (6), 969–977; DOI 10.1242/jeb.014639.
- 651 (51) Wyatt, J.; Kenny, S.; Hobbs, K. D.; Mills, T.; Marshall, H. D.; Murray, H. M. The
652 Effect of Extended Wet-Storage on the Condition, Physiology and Stress Response

- 653 of Cultured Blue Mussels (*Mytilus Edulis* L. 1758) during Summer and Fall in
654 Northeastern Newfoundland. *Aquaculture* **2013**, *372–375*, 111–118; DOI
655 10.1016/j.aquaculture.2012.11.002.
- 656 (52) Hennebicq, R.; Fabra, G.; Pellerin, C.; Marcotte, I.; Myrand, B.; Tremblay, R. The
657 Effect of Spawning of Cultured Mussels (*Mytilus Edulis*) on Mechanical Properties,
658 Chemical and Biochemical Composition of Byssal Threads. *Aquaculture* **2013**,
659 *410–411*, 11–17; DOI 10.1016/j.aquaculture.2013.06.011.
- 660 (53) Shaw, B. L.; Battle, H. I. The Gross and Microscopic Anatomy of the Digestive Tract
661 of the Oyster *Crassostrea Virginica* (Gmelin). *Can. J. Zool.* **1957**, *35* (3), 325–347;
662 DOI 10.1139/z57-026.
- 663 (54) Hodson, P. V. The Toxicity to Fish Embryos of PAH in Crude and Refined Oils.
664 *Arch. Environ. Contam. Toxicol.* **2017**, *73* (1), 12–18; DOI 10.1007/s00244-016-
665 0357-6.
- 666 (55) Fossato, V. U.; Canzonier, W. J. Hydrocarbon Uptake and Loss by the Mussel
667 *Mytilus Edulis*. *Mar. Biol.* **1976**, *36* (3), 243–250; DOI 10.1007/BF00389285.
- 668 (56) Axelman, J.; Næes, K.; Näf, C.; Broman, D. Accumulation of Polycyclic Aromatic
669 Hydrocarbons in Semipermeable Membrane Devices and Caged Mussels (*Mytilus*
670 *Edulis* L.) in Relation to Water Column Phase Distribution. *Environ. Toxicol. Chem.*
671 **1999**, *18* (11), 2454–2461; DOI 10.1002/etc.5620181111.
- 672 (57) Baussant, T.; Sanni, S.; Jonsson, G.; Skadsheim, A.; Børseth, J. F.
673 Bioaccumulation of Polycyclic Aromatic Compounds: 1. Bioconcentration in Two
674 Marine Species and in Semipermeable Membrane Devices during Chronic
675 Exposure to Dispersed Crude Oil. *Environ. Toxicol. Chem.* **2001**, *20* (6), 1175–
676 1184; DOI 10.1002/etc.5620200606.
- 677 (58) Camus, L.; Birkely, S. R.; Jones, M. B.; Børseth, J. F.; Grøsvik, B. E.; Gulliksen, B.;
678 Lønne, O. J.; Regoli, F.; Depledge, M. H. Biomarker Responses and PAH Uptake
679 in *Mya Truncata* Following Exposure to Oil-Contaminated Sediment in an Arctic

- 680 Fjord (Svalbard). *Sci. Total Environ.* **2003**, *308* (1–3), 221–234; DOI
681 10.1016/S0048-9697(02)00616-2.
- 682 (59) Hylland, K. Polycyclic Aromatic Hydrocarbon (PAH) Ecotoxicology in Marine
683 Ecosystems. *J. Toxicol. Environ. Heal. - Part A* **2006**, *69* (1–2), 109–123; DOI
684 10.1080/15287390500259327.
- 685 (60) Jeong, W. G.; Cho, S. M. Long-Term Effect of Polycyclic Aromatic Hydrocarbon on
686 Physiological Metabolisms of the Pacific Oyster, *Crassostrea Gigas*. *Aquaculture*
687 **2007**, *265* (1–4), 343–350; DOI 10.1016/j.aquaculture.2007.02.021.
- 688 (61) Kim, M.; Cho, S.; Jeong, W. Short-Term Physiological Response of the Pacific
689 Oyster, *Crassostrea Gigas*, on Exposure to Varying Levels of Polycyclic Aromatic
690 Hydrocarbon. *Aquac. Res.* **2007**, *38*, 1612–1618; DOI 10.1111/j.1365-
691 2109.2007.01821.x.
- 692 (62) Donkin, P.; Widdows, J.; Evans, S. V.; Worrall, C. M.; Carr, M. Quantitative
693 Structure-Activity Relationships for the Effect of Hydrophobic Organic Chemicals
694 on Rate of Feeding by Mussels (*Mytilus Edulis*). *Aquat. Toxicol.* **1989**, *14* (3), 277–
695 293; DOI 10.1016/0166-445X(89)90021-0.
- 696 (63) Martins, L. K. P.; Nascimento, I. A.; Fillmann, G.; King, R.; Evangelista, A. J. A.;
697 Readman, J. W.; Depledge, M. H. Lysosomal Responses as a Diagnostic Tool for
698 the Detection of Chronic Petroleum Pollution at Todos Os Santos Bay, Brazil.
699 *Environ. Res.* **2005**, *99* (3), 387–396; DOI 10.1016/j.envres.2005.01.001.
- 700 (64) Hwang, H. M.; Wade, T. L.; Sericano, J. L. Residue-Response Relationship
701 between PAH Body Burdens and Lysosomal Membrane Destabilization in Eastern
702 Oysters (*Crassostrea Virginica*) and Toxicokinetics of PAHs. *J. Environ. Sci. Heal.*
703 *- Part A Toxic/Hazardous Subst. Environ. Eng.* **2008**, *43* (12), 1373–1380; DOI
704 10.1080/10934520802232006.
- 705 (65) Moore, M. N.; Viarengo, A. Lysosomal Membrane Fragility and Catabolism of
706 Cytosolic Proteins: Evidence for a Direct Relationship. *Experientia* **1987**, *43* (3),

- 707 320–323.
- 708 (66) Tapia-morales, S.; López-landavery, E. A.; Gi, I.; Ramírez-álvarez, N. Marine
709 Genomics Transcriptomic Response of the *Crassostrea Virginica* Gonad after
710 Exposure to a Water-Accommodation Fraction of Hydrocarbons and the Potential
711 Implications in Reproduction. **2019**, *43* (October 2018), 9–18; DOI
712 10.1016/j.margen.2018.10.004.
- 713 (67) Babarro, J. M. F.; Reiriz, M. J. F. Secretion of Byssal Threads in *Mytilus*
714 *Galloprovincialis*: Quantitative and Qualitative Values after Spawning Stress. *J.*
715 *Comp. Physiol. B Biochem. Syst. Environ. Physiol.* **2010**, *180* (1), 95–104; DOI
716 10.1007/s00360-009-0392-y.
- 717 (68) Zardi, G. I.; McQuaid, C. D.; Nicastro, K. R. Balancing Survival and Reproduction:
718 Seasonality of Wave Action, Attachment Strength and Reproductive Output in
719 Indigenous *Perna Perna* and Invasive *Mytilus Galloprovincialis* Mussels. *Mar. Ecol.*
720 *Prog. Ser.* **2007**, *334*, 155–163; DOI 10.3354/meps334155.
- 721 (69) Hawkins, A.; Bayne, B. Seasonal Variation in the Relative Utilization of Carbon and
722 Nitrogen by the Mussel *Mytilus Edulis*: Budgets, Conversion Efficiencies and
723 Maintenance Requirements. *Mar. Ecol. Prog. Ser.* **1985**, *25*, 181–188; DOI
724 10.3354/meps025181.
- 725 (70) Smolarz, K.; Hallmann, A.; Zabrzeńska, S.; Pietrasik, A. Elevated Gonadal Atresia
726 as Biomarker of Endocrine Disruptors: Field and Experimental Studies Using
727 *Mytilus Trossulus* (L.) and 17-Alpha Ethinylestradiol (EE2). *Mar. Pollut. Bull.* **2017**,
728 *120*(1–2), 58–67; DOI 10.1016/j.marpolbul.2017.04.007.
- 729 (71) Berthou, F.; Balouët, G.; Bodennec, G.; Marchand, M. The Occurrence of
730 Hydrocarbons and Histopathological Abnormalities in Oysters for Seven Years
731 Following the Wreck of the Amoco Cadiz in Brittany (France). *Mar. Environ. Res.*
732 **1987**, *23* (2), 103–133; DOI 10.1016/0141-1136(87)90041-9.
- 733 (72) Bignell, J. P.; Stentiford, G. D.; Taylor, N. G. H.; Lyons, B. P. Histopathology of

- 734 Mussels (*Mytilus* Sp.) from the Tamar Estuary, UK. *Mar. Environ. Res.* **2011**, *72*(1–
735 2), 25–32; DOI 10.1016/j.marenvres.2011.05.004.
- 736 (73) González-Fernández, C.; Albentosa, M.; Campillo, J. A.; Viñas, L.; Franco, A.;
737 Bellas, J. Effect of Mussel Reproductive Status on Biomarker Responses to PAHs:
738 Implications for Large-Scale Monitoring Programs. *Aquat. Toxicol.* **2016**, *177*, 380–
739 394; DOI 10.1016/j.aquatox.2016.06.012.
- 740 (74) Vignier, J.; Donaghy, L.; Soudant, P.; Chu, F. L. E.; Morris, J. M.; Carney, M. W.;
741 Lay, C.; Krasnec, M.; Robert, R.; Volety, A. K. Impacts of Deepwater Horizon Oil
742 and Associated Dispersant on Early Development of the Eastern Oyster
743 *Crassostrea Virginica*. *Mar. Pollut. Bull.* **2015**, *100* (1), 426–437; DOI
744 10.1016/j.marpolbul.2015.08.011.
- 745 (75) Vignier, J.; Soudant, P.; Chu, F. L. E.; Morris, J. M.; Carney, M. W.; Lay, C. R.;
746 Krasnec, M. O.; Robert, R.; Volety, A. K. Lethal and Sub-Lethal Effects of
747 Deepwater Horizon Slick Oil and Dispersant on Oyster (*Crassostrea Virginica*)
748 Larvae. *Mar. Environ. Res.* **2016**, *120*, 20–31; DOI
749 10.1016/j.marenvres.2016.07.006.
- 750 (76) Vignier, J.; Volety, A. K.; Rolton, A.; Le Goïc, N.; Chu, F. L. E.; Robert, R.; Soudant,
751 P. Sensitivity of Eastern Oyster (*Crassostrea Virginica*) Spermatozoa and Oocytes
752 to Dispersed Oil: Cellular Responses and Impacts on Fertilization and
753 Embryogenesis. *Environ. Pollut.* **2017**, *225*, 270–282; DOI
754 10.1016/j.envpol.2016.11.052.
- 755 (77) Bayne, B. L.; Widdows, J.; Gabbott, P. A. Some Effects of Stress in the Adult on
756 the Eggs and Larvae of *Mytilus Edulis* L. *J. Mar. Biol. Assoc. United Kingdom* **1975**,
757 *55*(3), 675–689; DOI 10.1017/S0025315400017343.
- 758 (78) Bayne, B. L.; Moore, M. N.; Lowe, D. M.; Widdows, J.; Holland, D. Further Studies
759 on the Effects of Stress in the Adult on the Eggs of *Mytilus Edulis*. *J. Mar. Biol.*
760 *Assoc. United Kingdom* **1978**, *58*(4), 825–841; DOI 10.1017/S0025315400056794.

- 761 (79) Knecht, A. L.; Truong, L.; Marvel, S. W.; Reif, D. M.; Garcia, A.; Lu, C.; Simonich,
762 M. T.; Teeguarden, J. G.; Tanguay, R. L. Transgenerational Inheritance of
763 Neurobehavioral and Physiological Deficits from Developmental Exposure to
764 Benzo[a]Pyrene in Zebrafish. *Toxicol. Appl. Pharmacol.* **2017**, *329*, 148–157; DOI
765 10.1016/j.taap.2017.05.033.
- 766 (80) Hansen, B. H.; Tarrant, A. M.; Salaberria, I.; Altin, D.; Nordtug, T.; Øverjordet, I. B.
767 Maternal Polycyclic Aromatic Hydrocarbon (PAH) Transfer and Effects on Offspring
768 of Copepods Exposed to Dispersed Oil with and without Oil Droplets. *J. Toxicol.*
769 *Environ. Heal. - Part A Curr. Issues* **2017**, *80* (16–18), 881–894; DOI
770 10.1080/15287394.2017.1352190.
- 771 (81) Pelletier, M. C.; Burgess, R. M.; Cantwell, M. G.; Serbst, J. R.; Ho, K. T.; Ryba, S.
772 A. Importance of Maternal Transfer of the Photoreactive Polycyclic Aromatic
773 Hydrocarbon Fluoranthene from Benthic Adult Bivalves to Their Pelagic Larvae.
774 *Environ. Toxicol. Chem.* **2000**, *19*(11), 2691–2698.
- 775 (82) Wessel, N.; Rousseau, S.; Caisey, X.; Quiniou, F.; Akcha, F. Investigating the
776 Relationship between Embryotoxic and Genotoxic Effects of Benzo[a]Pyrene, 17 α -
777 Ethinylestradiol and Endosulfan on *Crassostrea Gigas* Embryos. *Aquat. Toxicol.*
778 **2007**, *85*(2), 133–142; DOI 10.1016/j.aquatox.2007.08.007.
- 779 (83) Yang, C.; Wang, Z.; Yang, Z.; Hollebone, B.; Brown, C. E.; Landriault, M.;
780 Fieldhouse, B. Chemical Fingerprints of Alberta Oil Sands and Related. *Environ.*
781 *Forensics* **2011**, *12*(2), 173–188; DOI 10.1080/15275922.2011.574312.

782

783

